

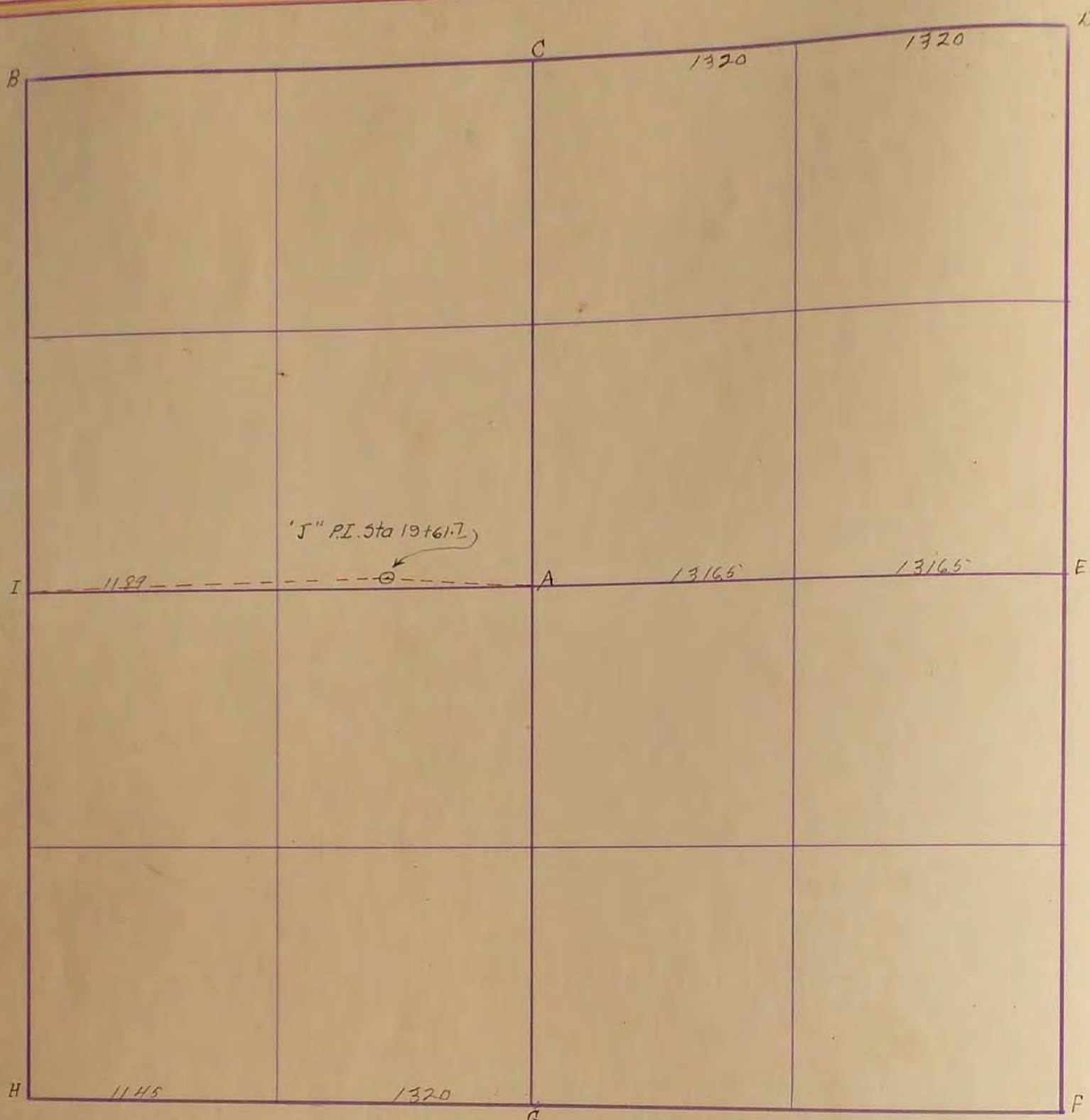
SURVEYOR'S RECORD

Section 6

Township 105

Range 42

6
7



Oct. 2, 1900

- A stone in road
- B.
- C. Gov. mound and Pit
- D. stone in grade
- E " " " "
- F gov mound and state
- G stone and state
- H stone mound
- I

J. H. Hoelstrom

"A" "Concrete Stone" R.P. Tack in ~~cor. fence post North~~
 Center steel post S.E. 48.64
 Center steel post S.W. 54.96 Oct 5, 1976
~~51.2 (Stone 1 east of fence line North) R.P. Bottle cap in~~
~~cor. post N. 56.3; R.P. Bottle cap in tel. pole NW 79.1' (1950)~~

"E" "Concrete Stone" R.P. Tack in cor. fence post S.E. 58.6';
 R.P. Tack in gate post S.E. 67.3; R.P. Tack in cor. fence
 post N.W. 59.5' (VOID 1950)

"I" "Concrete Stone" & "Cement Tile": R.P. Tack in cor. post SW.
 78.8; R.P. Tack in cor. post N.W. 62.8; R.P. Tack in tel. pole
 NE. 63.5'

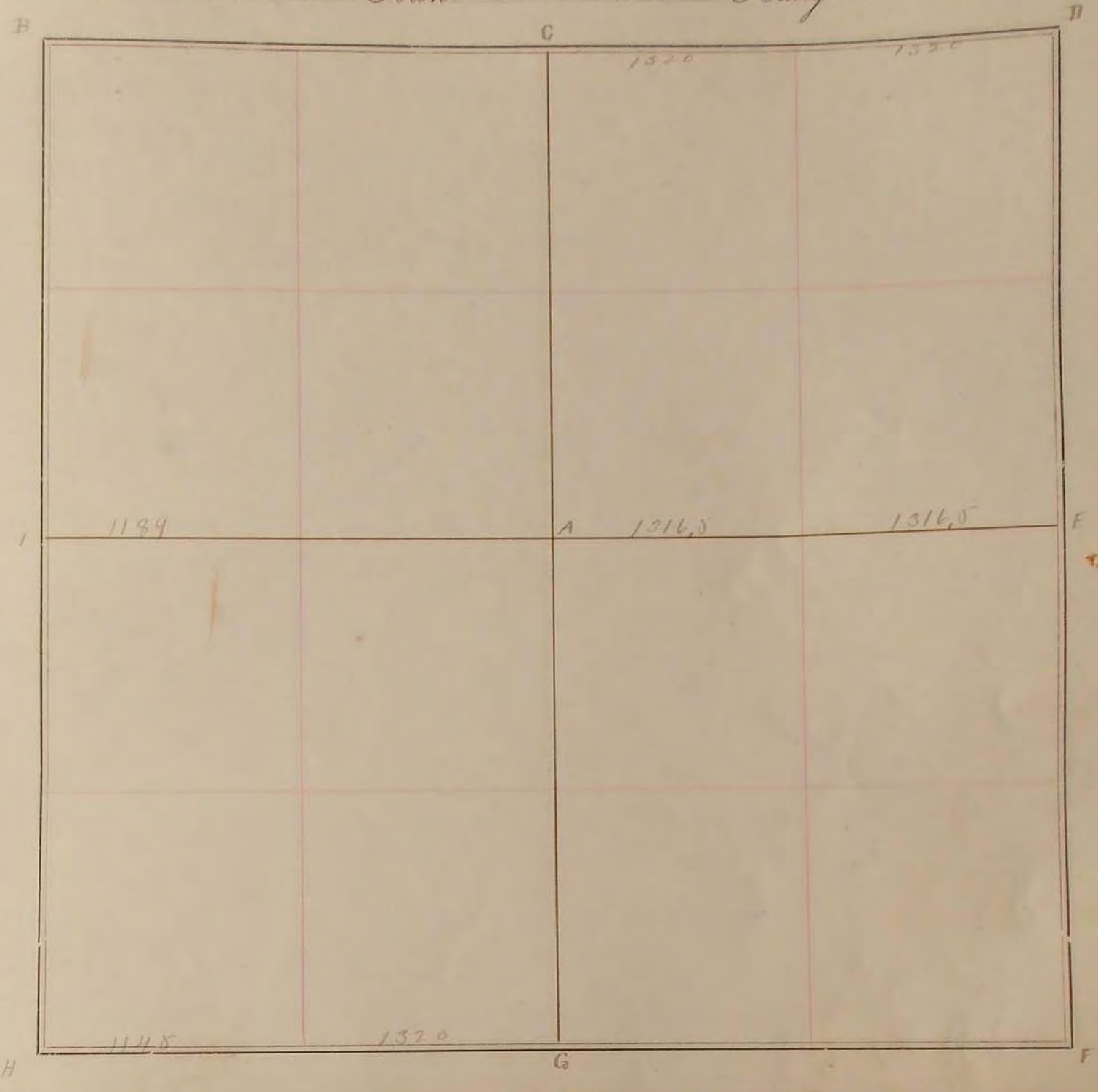
"J" (P.I. Sta 19+61.7) "Concrete Stone" R.P. Tack in Hub in rocks
 S.E. 48.0'; R.P. Tack in Hub south & West in rocks 42.0'

"E" "Concrete Stone" R.P. Bottle cap in power pole SW. 58.5';
 P.P. 86.90
 R.P. Bottle cap in cor. post S.E. 58.3' (1950)
 Bottle cap in P.P. N.W. 58.18 Oct 5, 1976

~~"E" "Concrete Stone" located same monument as below submat. Plot 2"~~
~~steel v. bar above monument: R.P. N.E. cor. post S.E. 59.03; R.P.~~
~~N.W. P.P. SW. 56.65; R.P. N.W. P.P. NW. 58.18. Sept 1974~~

SURVEY No. 1102

Section 6 Town 105 Range 42



FIELD NOTES.

October 2, 1900

- A Stone in road
- B
- C Gov. mound and pit
- D Stone in grade
- E " " "
- F Gov. mound and stake
- G Stone and stake
- H " mound
- I

J.W. Woodstencraft